

Table 3 Benchtop pH/cond. Meter Model Comparison

Model	PC910	PC950	PC9500	
Parameter	pH/mV/Cond./TDS/Sal/Res/°C(°F)			
pH	Range	0 to 14.00 pH	-2.000 to 20.000 pH	
	Resolution	0.1/0.01 pH	0.1/0.01/0.001 pH	
	Accuracy	±0.01 pH±1 digit	±0.002pH±1 digit	
	Temp. compensation	0 to 100°C (32 to 212°F) , automatic or manual		
	Calibration	1~3 points automatic	1 ~ 5 points automatic	
	Buffer	USA/NIST/CH	USA/NIST/DIN/CH/User	
Other specifications are same with table1 (Calibration remind, Calibration data checking, Measuring alarm, Stability setting)				
mV	Range	±2000mV	±2000mV	
	Resolution	1mV	0.1/1mV	
	Accuracy	±0.1% F.S ±1 digit	±0.03% F.S ±1 digit	
Conductivity	Range	0~200.0mS/cm	0~2000mS/cm	
	Resolution	0.1/1µS, 0.01/0.1mS	0.01/0.1/1µS, 0.01/0.1/1mS	
	Accuracy	±1%F.S±1 digit	±0.5%F.S±1 digit	
	Electrode constant	0.1/1.0/10.0 cm-1		
	Temp. compensation	0 to 50°C (32 to 212°F) , automatic or manual		
	Criterion temperature	15~30 °C		
	Temp. compensation coefficient	0~10.00%/°C		
	Calibration	1~4 points automatic		
	Calibration standard	USA/CH	USA/CH/User	
	Other specifications are the same with table2 (Calibration remind, Calibration data checking, Measuring alarm)			
TDS	Ranger	0.1mg/l~100 g/l	0.1mg/l~500 g/l	
	TDS coefficient	0.40~1.00		
Salinity	Ranger	0~100 ppt	0~100 ppt	
Resistivity	Ranger	No	0~20 MΩ•cm	
Temperature	Ranger	0~100.0°C, 32.0~212 °F	-10~110.0°C, 14.0~230°F	
	Resolution	0.1°C ; 0.1°F		
	Accuracy	±0.5°C±1 digit		
Function	Display	TFT color display		
	Stable measuring indication	With ☺ icon		
	Automatic hold	Yes	Yes	Yes
	Date and time	No	No	Yes
	Data storage	200 sets	200 sets	2000 sets
	Timing storage	No	No	Yes
	Self diagnosis information	Yes	Yes	Yes
	USB output	No	No	Yes
	GLP print	No	No	Yes (printer optional)
	External keypad	No	No	Yes
	Electrode holder	602 flexible holder	606 combination test bench (with stirrer)	
	IP Rating	IP54 water and dust proof		
	Electrode	pH: 201T-F, Cond.: 2301T-F	pH:LabSen 211, Cond:2401T-F Temp: MP500	
Other	Power	DC9V		
	Dimension	200×220×100mm	360×165×400mm	
	Weight	0.95kg	1.25kg	

Apera Instruments, LLC (U.S.A)
 Add: 6656 Busch Blvd,
 Columbus Ohio 43229
 Tel: +1 614-285-380
 Email: info@aperainst.com
 Website: www.aperainst.com

Apera Instruments, GmbH (Europe)
 Add: Wilhelm-Muthmann-Str.15
 42329 Wuppertal Germany
 Tel. +49 (0)202 51988998
 Email: info@aperainst.de
 Website: www.aperainst.de

Shanghai Apera Instruments
 Co., Ltd. (China)
 Add: 481 Guiping Rd Building #16,4F,
 Shanghai China
 Tel: +86-21-63362480
 E-mail: wxmab@shsan-xin.com



Benchtop pH/Conductivity Meters

- pH
- mV
- Conductivity
- TDS
- Salinity
- Resistivity



- 700 Series
- 910 Series
- 950 Series
- 9500 Series

700 Series Benchtop Meter

- PH700 pH Meter pH/mV/Temp.
- EC700 Conductivity Meter Cond./TDS/Temp.

Main features

- The most economical choice for a reliable benchtop meter
- Equipped with ATC pH and conductivity electrodes, convenient to use
- Automatic calibration with calibration guide and self-diagnosis



910 Series Benchtop Meter

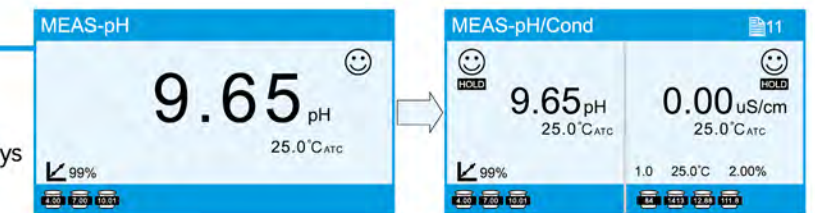
- PH910 pH Meter pH/mV/Temp.
- EC910 Conductivity Meter Cond./TDS/Temp.
- PC910 pH/Conductivity Meter pH/mV/Cond./TDS/Temp.

Main features

- TFT color screen with graphic and text guides
- Equipped with a flexible electrode holder
- Multi-language operating system (English, Chinese, German, Italian and Spanish)

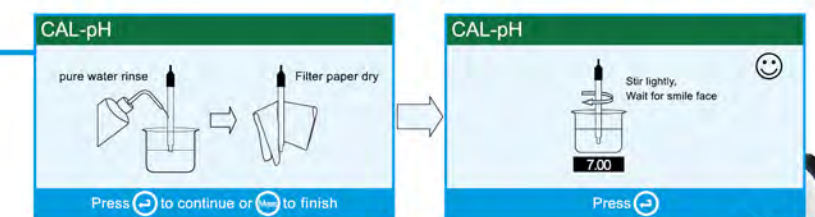
Measurement mode

- Simultaneously display two measuring parameters
- When measuring value is stable, ☺ icon displays
- With automatic hold function



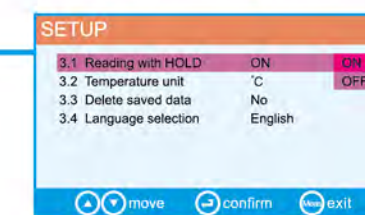
Calibration mode

Graphic calibration guide ensures correct calibration procedures to be completed.



Parameter setting mode

Clear menu setting, with operating guide.



BNC connector to mount various pH electrodes.



Key pressing comes with buzzer sounds.



950 Series Benchtop Meter

- PH950 pH Meter pH/mV/Temp.
- EC950 Conductivity Meter Cond./TDS/Temp.
- PC950 pH/Conductivity Meter pH/mV Cond./TDS/Temp.

Main features

- TFT color screen with graphic and text guide
- Multifunctional test bench with intelligent stirrer and flexible electrode holder
- Multi-language operating system (English, Chinese, German, Italian and Spanish)



MEAS-pH

9.65 pH

25.0°C ATC

99%

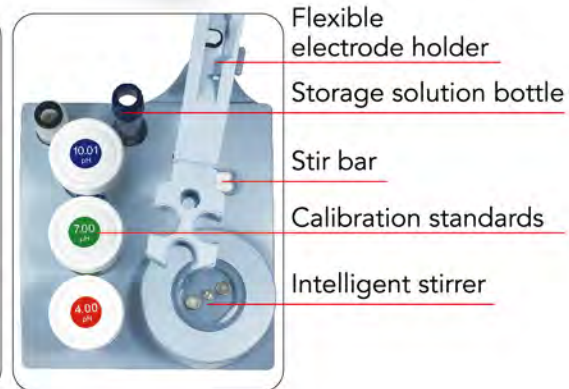
4.00 7.00 10.01

Save rotating speed

Stirrer switch

Rotating speed icon (S) & (M)

Press (M) key 3s to save rotating speed and display (M) icon, adjust rotating speed (S) icon will be displayed, press (M) key again to switch (M) to (S) (two different speed)



(a) Connect to use



(b) Separate to use

9500 Series Benchtop Meter

- PH9500 pH Meter pH/mV/Temp.
- EC9500 Conductivity Meter Cond./TDS/Salt/Res/Temp.
- PC9500 pH/Conductivity Meter pH/mV/Cond./TDS/Salt/Res/Temp.

Main features

- TFT color screen with graphic and text guides
- Conform to GLP data management standard, each group data includes time & date, ID of sample, electrode, and user
- Operation with password protection; support GLP printer
- Multi-language operating system (English, Chinese, German, Italian and Spanish)

MEAS-pH/Cond

2018/03/20 22:22:04

Date and time

20.000 pH

0.00 µS/cm

25.0°C MTC

21.9°C ATC

Storage ID

User ID

pH electrode ID

12345

1001

p000001

10016

1.68 4.00 7.00 10.01 12.45 84 1413 12.88

Stirrer icon

Storage mode

Sample ID

Conductivity electrode ID




Manual datalog	(M)	Save in meter
	(M+)	Save in printer
Auto. Timing datalog	(M)	Save in computer
	(M)	Save in meter
	(M)	Save in printer
	(M)	Save in computer



Table 1 Benchtop pH Meter Model Comparison

					
Model	PH700	PH910	PH950	PH9500	
Parameter	pH/mV/°C(°F)				
Range	0 to 14.00 pH		-2.000 to 20.000 pH		
Resolution	0.1/0.01 pH		0.1/0.01/0.001 pH		
Accuracy	±0.01 pH±1 digit		±0.002pH±1 digit		
Temp. compensation	0 to 100°C (32 to212°F) , automatic or manual				
Calibration	1~3 points automatic		1~5 points automatic		
Buffer	USA/NIST	USA/NIST/CH		USA/NIST/DIN/CH/User	
Calibration reminding	No	No	No	Yes	
Calibration data checking	No	Yes	Yes	Yes	
Measuring alarm	No	No	No	Yes	
Stability setting	No	No	No	Low-Middle-High	
mV	Range	±2000mV		±2000mV	
	Resolution	1mV	1mV		0.1/1mV
	Accuracy	±0.1% F.S ±1 digit		±0.03% F.S ±1 digit	
Temp.	Range	0~ 100.0°C ; 32.0 ~ 212 °F		-10~110.0°C; 14.0~230°F	
	Resolution	0.1°C ; 0.1/1°F			
	Accuracy	±0.5°C±1 digit ; ±0.9°F±1 digit			
Function	Display	LCD	TFT color display		
	Stable measuring indication	with 😊 icon			
	Automatic hold	No	Yes	Yes	Yes
	Date and time	No	No	No	Yes
	Data storage	50 sets	100 sets	100 sets	1000 sets
	Timing storage	No	No	No	Yes
	Self diagnosis information	Yes	Yes	Yes	Yes
	USB output	No	No	No	Yes
	GLP print	No	No	No	Yes (printer optional)
	External keypad	No	No	No	Yes
	pH electrode connector	BNC	BNC	BNC	BNC
	Electrode holder	Simple holder	602 flexible holder	606 combination test bench (with stirrer)	
	IP Rating	IP54 water and dust proof			
Electrode	201T-F		pH: LabSen211, Temperature: MP500		
Other	Power	DC9V			
	Dimension	240×235×103mm	200×220×100mm	360×165×400mm	
	Weight	1kg	0.95kg	1.25kg	

Table 2 Benchtop Conductivity Meter Model Comparison

					
Model	EC700	EC910	EC950	EC9500	
Parameter	Cond./TDS/°C(°F)	Cond./TDS/Sal/°C(°F)		Cond./TDS/Sal/Res/°C(°F)	
Range	0~200.0mS/cm	0~200.0mS/cm		0~2000mS/cm	
Resolution	0.1/1µS, 0.01/0.1mS				
Accuracy	±1%F.S±1 digit			±0.5%F.S±1 digit	
Electrode constant	0.1/1.0/10.0 cm-1				
Temp. compensation	0 to 50°C (32 to212°F) , automatic or manual				
Criterion temperature	15~30 °C				
Temp. compensation coefficient	0~10.00%/°C				
Calibration	1~4 points automatic				
Calibration standard	USA	USA/CH	USA/CH	USA/CH/User	
Calibration reminding	No	No	No	Yes	
Calibration data checking	No	Yes	Yes	Yes	
Measuring alarm	No	No	No	Yes	
TDS	Range	0.1mg/l~100 g/l		0.1mg/l~500 g/l	
	TDS coefficient	0.40~1.00			
Salinity	Range	No	0~100 ppt	0~100 ppt	
Resistivity	Range	No	No	0~20MΩ•cm	
Temp.	Range	0~100.0°C; 32.0~212°F		-10~110.0°C; 14.0~230°F	
	Resolution	0.1°C ; 0.1/1°F			
	Accuracy	±0.5°C±1 digit, ±0.9°F±1 digit			
Function	Display	LCD	TFT color display		
	Stable measuring indication	With 😊 icon			
	Automatic hold	No	Yes	Yes	Yes
	Date and time	No	No	No	Yes
	Data storage	50 sets	100 sets	100 sets	1000 sets
	Timing storage	No	No	No	Yes
	Self-diagnosis information	Yes	Yes	Yes	Yes
	USB output	No	No	No	Yes
	GLP print	No	No	No	Yes (printer optional)
	External keypad	No	No	No	Yes
	Cond. electrode connector	BNC	BNC	BNC	BNC
	Electrode holder	Simple holder	602 flexible holder	606 combination test bench (with stirrer)	
	IP Rating	IP54 water and dust proof			
Electrode	2301T-F		2401T-F		
Other	Power	DC9V			
	Dimension	240×235×103mm	200×220×100mm	360×165×400mm	
	Weight	1kg	0.95kg	1.25kg	